



TANDEM FX

user manual

READING AND UNDERSTANDING
Instruction for use are required to use this product.

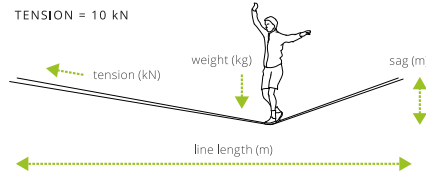


1. WARNING

For slacklining only. Understand and accept the risks involved before participating. You are responsible for your own actions and decisions. Before using this product, read and understand all instructions and warnings that accompany it and familiarize yourself with its proper use, capabilities and limitations. Contact Equilibrium Slacklines if you are uncertain about how to use this product. Do not modify this product in any way. Check the condition of product components before and after each use. Failure to read and follow these warnings can result in severe injury or death!

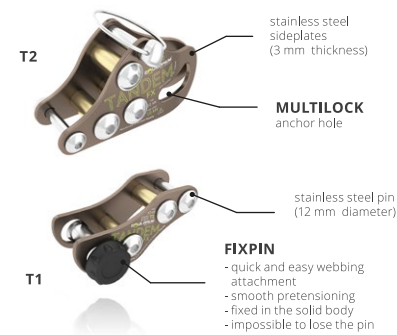
Maximum tension is **10 kN**.
Minimal sag in the middle of the line:

LINE LENGTH	WEIGHT				
	50 kg	60 kg	70 kg	80 kg	90 kg
10 m	0,13	0,15	0,18	0,20	0,23
20 m	0,25	0,30	0,35	0,40	0,45
30 m	0,38	0,45	0,53	0,60	0,68
40 m	0,50	0,60	0,70	0,80	0,90
50 m	0,63	0,75	0,88	1,00	1,13
60 m	0,75	0,90	1,05	1,20	1,35
70 m	0,88	1,05	1,23	1,40	1,58
80 m	1,00	1,20	1,40	1,60	1,80



TANDEM is not certified for usage in heights. Do not use this device higher than 1 m above the

2. DESCRIPTION



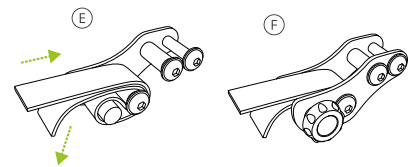
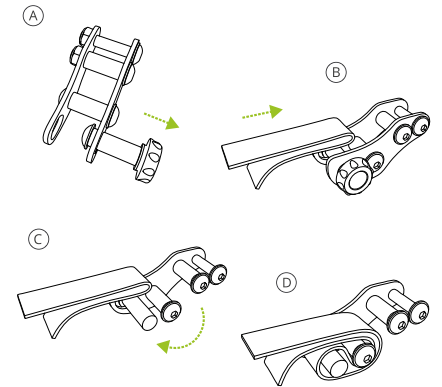
Tensioning system Tandem is designed for rigging slacklines up to 10 kN of tension. An unique concept guarantees minimal size and weight while saving enough efficiency and operating flexibility. The basic Tandem setup works with a mechanical advantage of 8:1 multiplied by 3:1 (CamPull). The main line is connected to the T-1 locker with a possibility to hand pretension the webbing. The T1 locker is attached to a fix anchor with a 10-12 mm shackle. The integrated brake works on self-jamming principle so it is recommended to back the tensioning webbing up with a knot after reaching required tension in the system.

3. SAFETY RECOMMENDATIONS

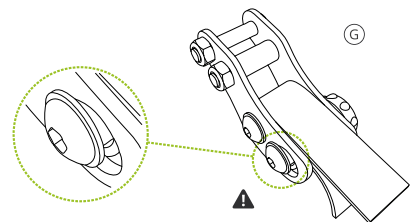
Always tie a stopper knot on the loose tail of webbing (the piece of webbing that comes out of the locking device) to prevent slipping of the line under high tensions. Always backup the anchoring device with a separate sling or a piece of rope to a secure anchor to prevent the metal parts flying around in case of the anchor failure. If you lack experience, use this equipment under proper supervision.

4. INSTRUCTION FOR USE

- Slide the Fixpin out of Tandem T1
- Make a bend on webbing. Put it inside Tandem T1 between middle and rear axis. Webbing that will be tensioned must face up.
- Wrap the bend around middle axis.
- Put the bent webbing between front holes in the sideplates and slide the Fixpin through the bend back in the locked position. The Fixpin must be fully locked before putting any tension on the device! (see pic. G)
- To pretension the slackline by hand, pull out the bottom loose end of webbing, whilst feed the top layer of webbing inside Tandem.
- Check the right position of the webbing. The line must be perfectly aligned without any twist inside of the device.



- G** The fixpin must be fully locked after installing the webbing and before tensioning the slackline!



5. CARE AND MAINTENANCE

TENSIONING WEBBING INSTALLATION:

Unfold the tensioning webbing so it is not twisted. Grab the sewn loop at the end and put it through T-1 around the axis 1 (by the arrow on sideplate). Then run the sewn end around axis 2, 1, 2, 3, 4 and 3 - wind the webbing "inside" the device. Attach the sewn loop to axis nr. 5. In this formation you can lengthen or shorten the system Tandem to required length.

CAMPULL INSTALLATION (MULTIPLIER):

Grab the other end of tensioning webbing (coming out of T-1) and put it through the CampPull (see pic TANDEM). CampPull can slide in direction to T-1, while block the webbing in direction to T-2.

BRAKE INSTALLATION:

Make a bend on the free end of webbing behind CamPull, so the tensioned part is at the bottom (see pic TANDEM). Wind the bend around the axis B1 and then fix it with the pin B2. Make sure that the safety lock is on.

LOCKING THE MAIN LINE:

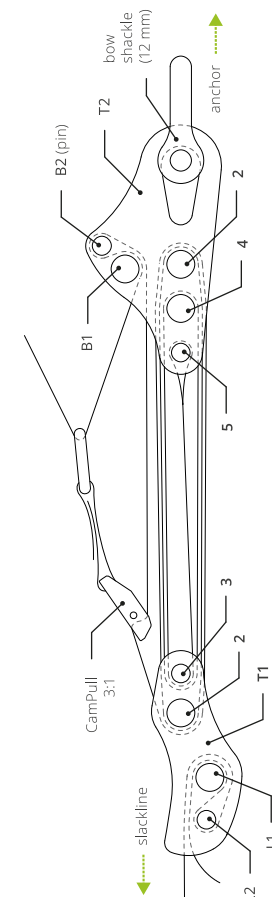
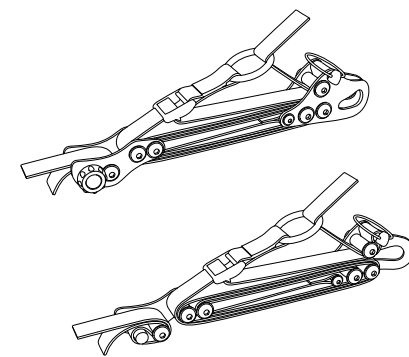
Make a bend of the main line, so the tensioned part is at the top (A). Wind the bend around the axis L1 and then fix it with the pin L2. It is possible to pretension the line by pulling on free end of the webbing, which removes some slack from the system (B).

TENSIONING

Run the free end of tensioning webbing through the ring on CamPull and start tensioning. After CamPull reaches T-2, slide it back to T-1 and repeat the process until the line is not tight enough.

RELEASING:

Slide the CamPull as close as possible to T-1, so it leans against its sideplates. Open the lock of pin B2 and wrest it from T-2. Grab the tensioning webbing by hand, press the cam on CamPull and release the tension slowly.



Basic system 8:1

6. CARE AND MAINTENANCE

Slacklining gear must not come into contact with corrosive materials such as battery acid, battery fumes, solvents, chlorine bleach, antifreeze, isopropyl alcohol or gasoline.

After contact with saltwater or salt air, always rinse the product with fresh water and dry it perfectly. Store in a dry place.

7. SPECIFICATION

TANDEM FX TECHNICAL SPECIFICATIONS:	
maximum load	10 kN
minimal breaking strength	50 kN
weight (T1 + T2)	488 g
dimensions	90 x 40 x 48 mm
main diverter diameter	14 mm
inner width	26 mm

8. CONTACTS

Need help? Any questions?
Comments, compliments, complaints?

Check out www.eqb.cz or write us at info@eqb.cz

This product was completely designed by handsome slackliners and manufactured in the Czech Republic.